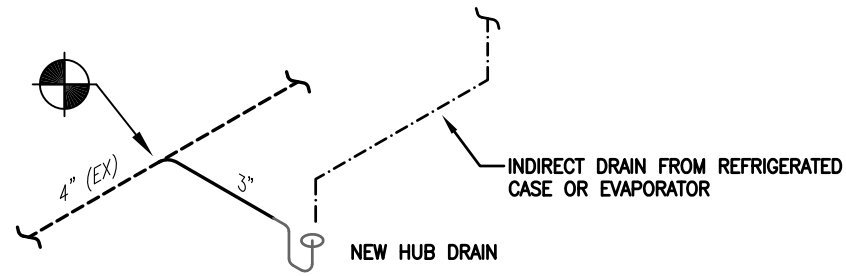
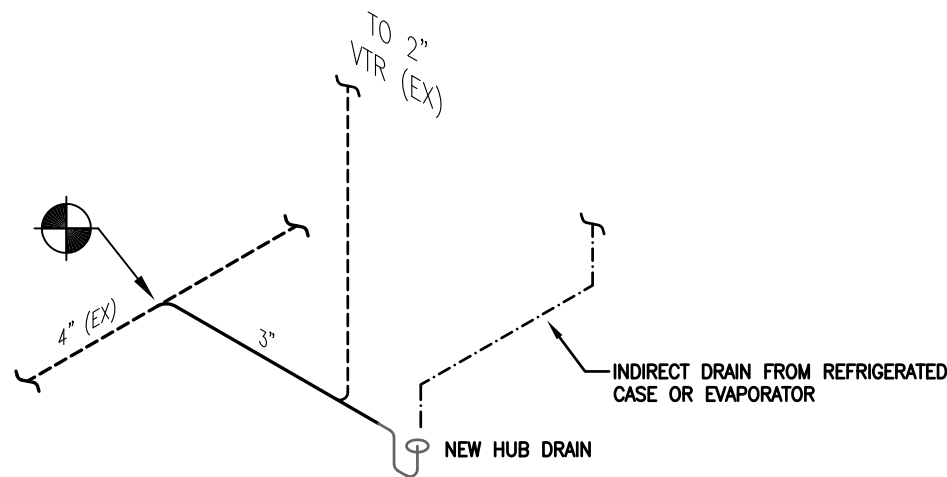


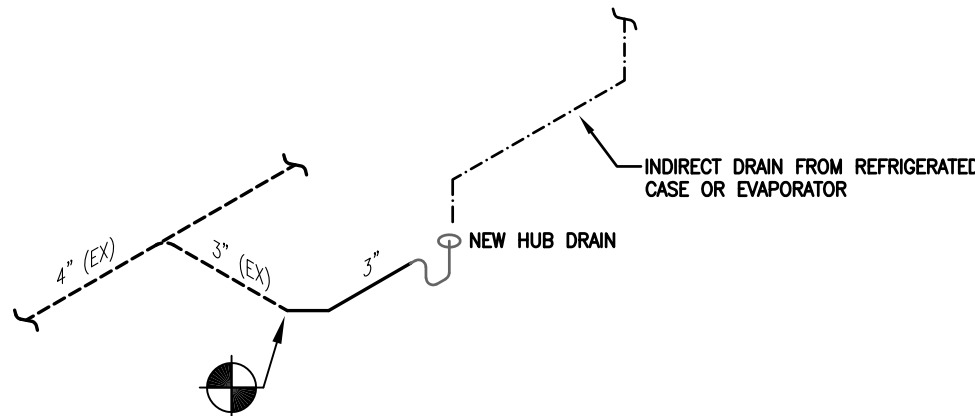
REVISIONS		
NO.	DESCRIPTION	DATE



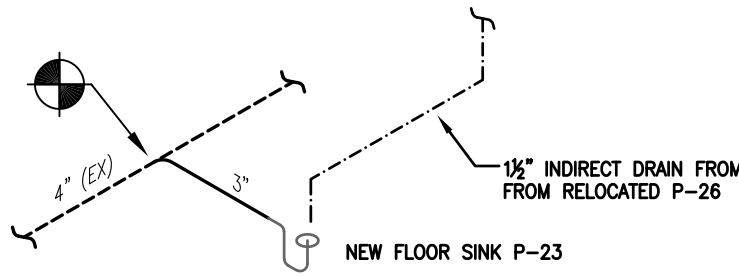
1 TYPICAL NEW DRAIN WASTE RISER DIAGRAM  
P7.01 NOT TO SCALE



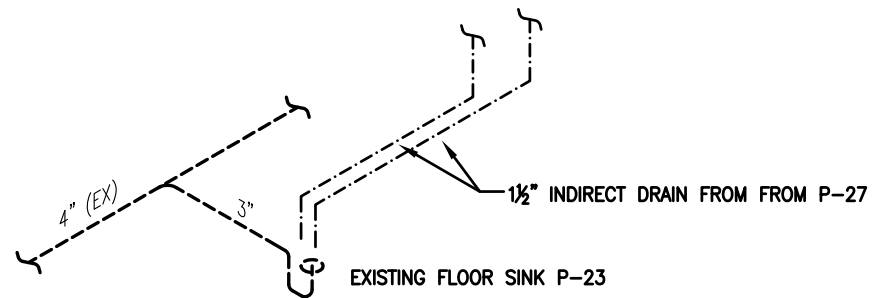
2 TYPICAL NEW DRAIN WITH A VENT WASTE RISER DIAGRAM  
P7.01 NOT TO SCALE



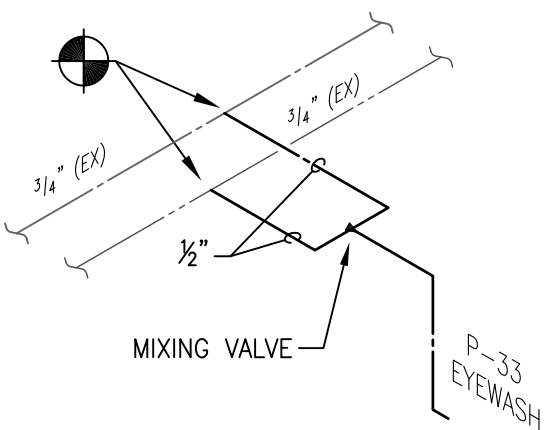
3 TYPICAL HUB DRAIN RELOCATION WASTE RISER DIAGRAM  
P7.01 NOT TO SCALE



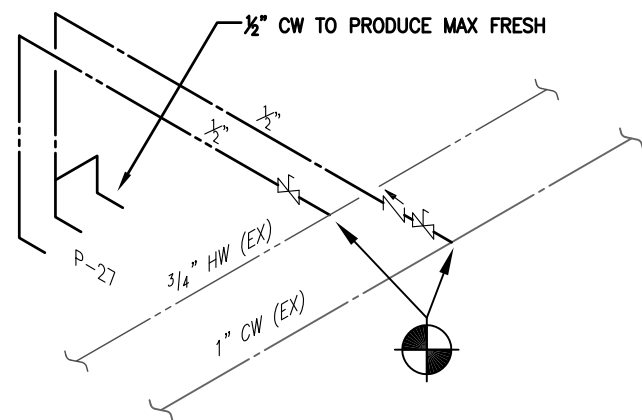
4 TYPICAL NEW FLOOR SINK WASTE RISER DIAGRAM  
P7.01 NOT TO SCALE



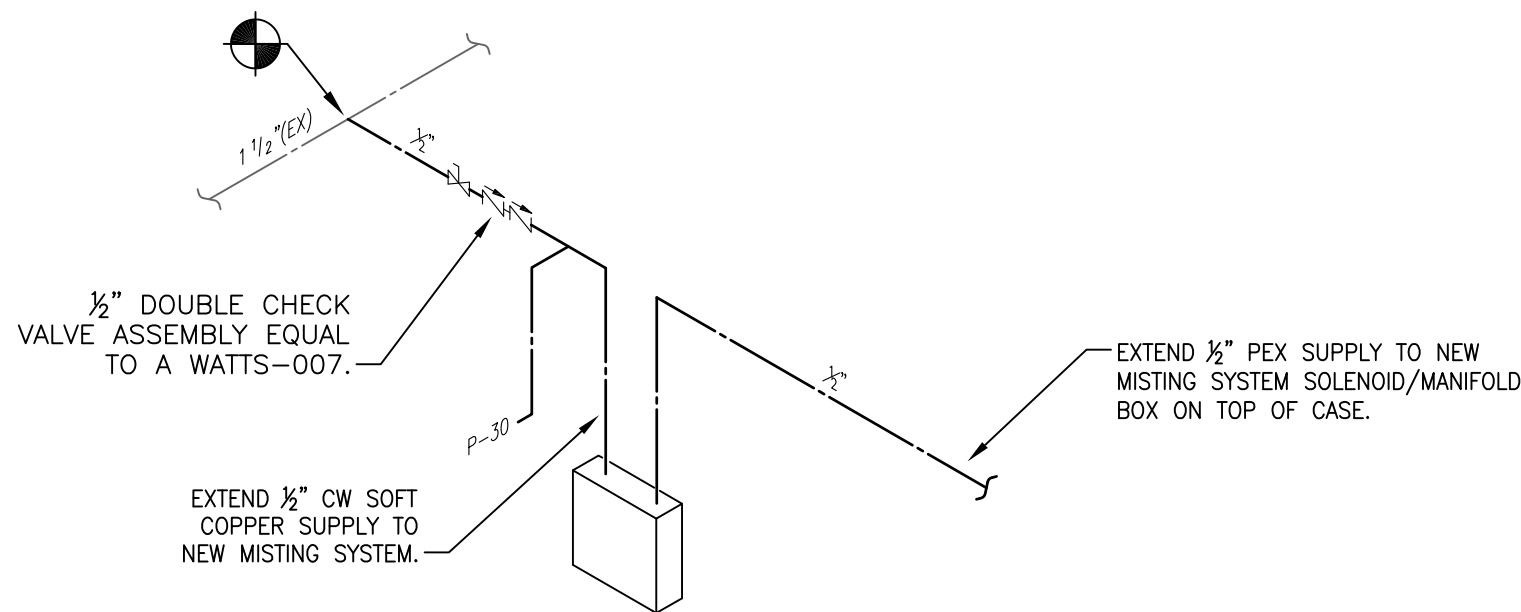
5 TYPICAL EXISTING FLOOR SINK WASTE RISER DIAGRAM  
P7.01 NOT TO SCALE



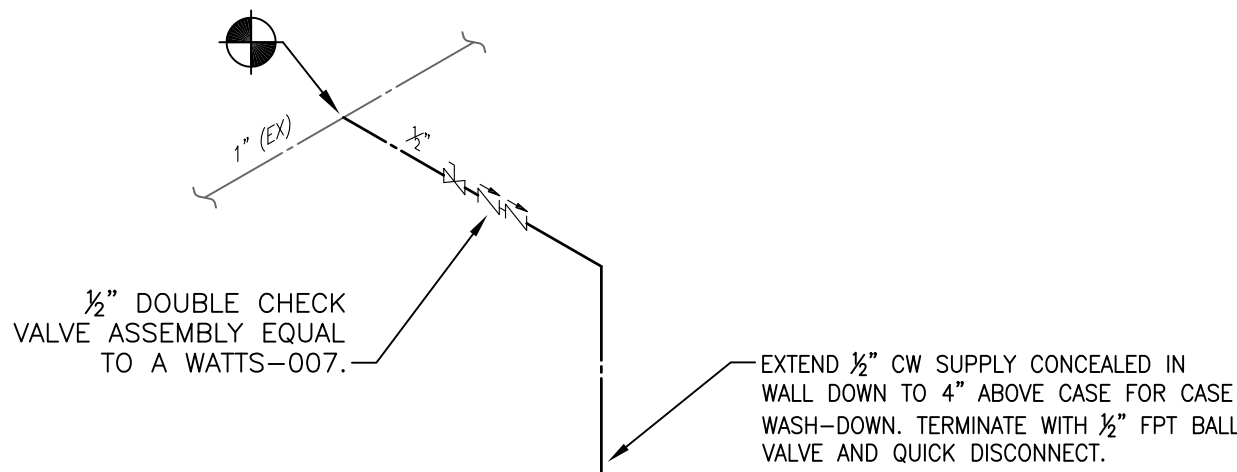
6 TYPICAL EYEWASH WATER RISER DIAGRAM  
P7.01 NOT TO SCALE



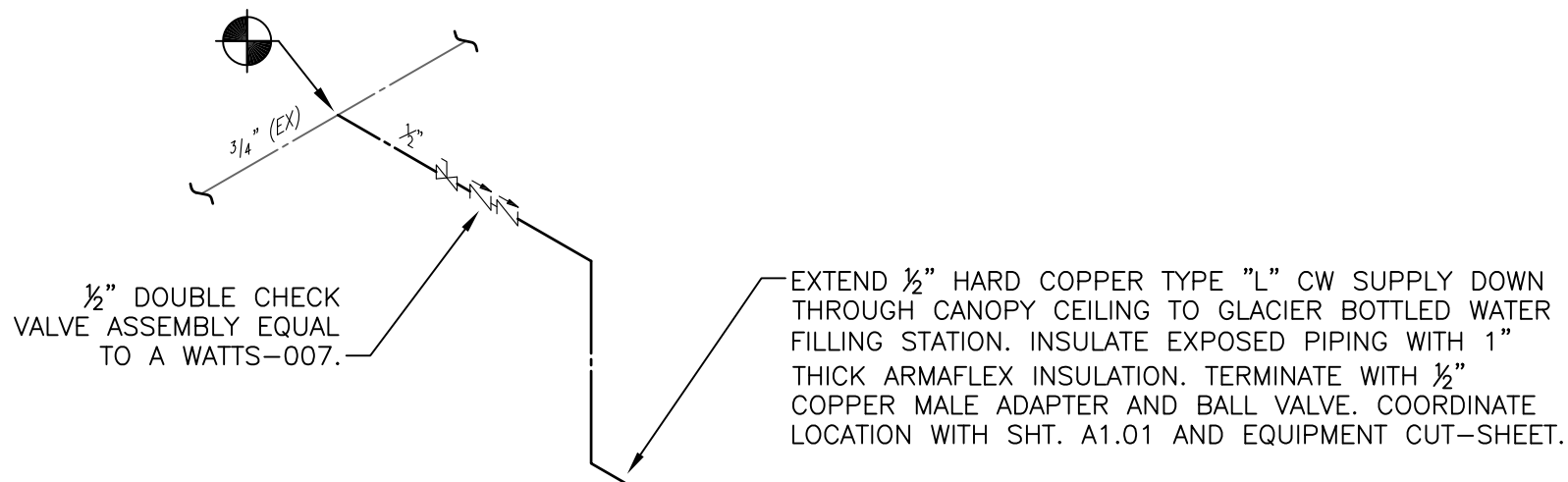
7 PARTIAL PRODUCE PREP WATER RISER DIAGRAM  
P7.01 NOT TO SCALE



8 MISTING SYSTEM WATER RISER DIAGRAM  
P7.01 NOT TO SCALE



9 WASH DOWN WATER RISER DIAGRAM  
P7.01 NOT TO SCALE



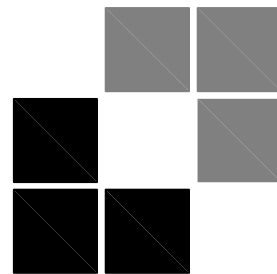
10 TYPICAL GLACIER WATER RISER DIAGRAM  
P7.01 NOT TO SCALE

**BOWERS**  
CONSULTING, PA  
1620 South MLK, Jr. Avenue - Suite 106  
Salisbury, NC 28144  
T: 704-630-0075 F: 704-630-0051  
NC PE CORPORATION: C-1619  
DE PE CORPORATION: 4390  
VA PE CORPORATION: 0405001434

I hereby certify that these documents were prepared or approved by me, and that I am a duly licensed professional engineer under the laws of the state of Maryland, License No. 41658, expiration date: 02/19/2022.

DRAWING FILE NAME  
2560 P7.01\_00  
RFS JOB #  
2019-042  
DATE  
02/21/2020  
P7.01  
6 OF 6

FOOD LION STORE 2560  
7514 NORTH POINT ROAD  
EDGEMERE, MD 21219  
PLUMBING RISER DIAGRAMS



**Riddick Fiedler Stern** pc  
Architecture ■ Planning ■ Interior Design  
261 West Bute Street ■ Norfolk, VA 23510 ■ (757) 627-2791